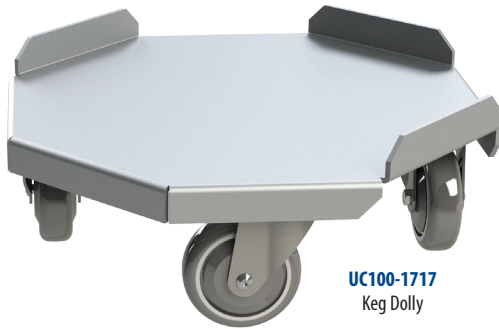


## UC100 – ALUMINUM SHEET METAL DOLLY



**UC100-1717**  
Keg Dolly

### Construction

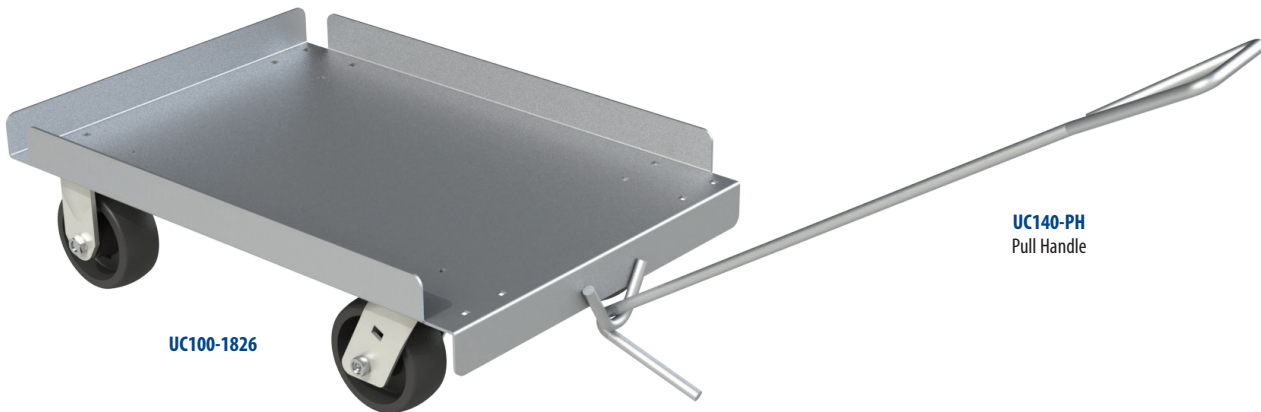
- Constructed of Heavy-Duty 3003-H14 aluminum alloy
- Sheet Metal Base
- Hook for Optional Pull Handle

### Base

- Standard base is made from .125" thick aluminum
- 3 lips up, 1 lip down design
- Pull hook is constructed from ½" aluminum solid rod
- Heavy Duty (HD) Option:** features a base made from .187" thick aluminum

### Casters

- 5" Poly-U plate casters
- Heavy Duty (HD) Option:** 5" x 2" Poly-U Casters



**UC100-1826**

**UC140-PH**  
Pull Handle

**EXAMPLE: UC100-1826-HD** (Aluminum Sheet Metal Dolly, Fits 18" x 26" Tray/Box Size [19"W x 27"D x 8" H], with .187" thick aluminum base and 5" x 2" Poly-U Casters)

EX. break-down: UC100		-	1826				-	HD	
Aluminum Sheet Metal Dolly		Size & Dolly Type		Width	Depth	Height	Aluminum Sheet Metal Dolly Options		
UC100	Aluminum Sheet Metal Dolly	1717	17" x 17" Keg Dolly	18"	18"	8"	PH	Pull Handle	
		1723	17" x 23" Food Carrier Dolly	17"	23"	8"	3	3" Swivel Casters	
		1826	18" x 26" Tray Dolly	19"	27"	8"	HD	Heavy Duty: .187" thick aluminum base and 5" x 2" Poly-U Casters	
		2020	20" x 20" Glass Rack Dolly	21"	21"	8"	Multiple Options may be selected by writing each option code subsequently without dashes or spaces. For example, if you want a Pull Handle with 3" Swivel Casters, you would write in the box below: PH3		
		2024	20" x 24" Meat Tray Dolly	20"	24"	8"			
		2027	20" x 27" Pizza Dough Box Dolly	21"	28"	8"			
		2733	27" x 33" Beef Box Dolly	28"	34"	8"			
Build Your Aluminum Sheet Metal Dolly Part Number									
Select a code (in BLUE) from each category and fill in the boxes below. Use this Part Number when you order your Aluminum Sheet Metal Dolly									
UC100		-					-		
UC100		-					-		

Choice Equipment Company, Inc. warrants to the original purchaser that all of its goods and services sold shall be free of defect in material or workmanship during the twenty-four (24) months, twelve (12) months on wheels and casters, from the date of shipment or performance, provided the product has been used within the following restrictions:

1. The product was used for its intended purpose.
2. The product was properly handled, stored, installed, maintained and operated.
3. The product was not loaded beyond the product's load capacity.
4. The product is cleaned and maintained with a cleansing agent generally accepted by the industry and the instructions of the specific agent are followed.
5. Any abuse or misuse of, changes to, alteration of, or improper maintenance of original equipment shall void this warranty in its entirety.

If any product provided by Choice Equipment Company, Inc. shows defect in material or workmanship, CEC will, at its option, repair or replace the defective product if (1) CEC has received notice of such defects within the specified warranty period, and (2) upon CEC's request, the defective items is returned at CEC's cost to a location designated by CEC.